



proceed to next page

DSC

From Tyco Security Products



North America
PRODUCT CATALOG
2014 • 2015



PowerSeries
neo

The Next Generation in Security Systems



Technologies come together in the most spectacular way.

Flexible by virtue of the modular, hardwired system, coupled with the simplicity of wireless devices and peripherals, PowerSeries Neo is ideal for scalable commercial security installations. PowerG – the industry's leading-edge wireless intrusion technology, infuses the system with powerful tools such as visual verification to offer superb system reliability. With optimized partitioning, integration potential and compatibility with leading-edge interactive solutions supported by DSC, infinite opportunities make PowerSeries Neo an undisputed first-class investment for the long term.

PowerSeries Neo by DSC is Security Redefined.

www.dsc.com

DSC

From Tyco Security Products

Contents

catalog 2014 | 15



North American Edition



Click on any heading
to access content.
Hit 'esc' to exit full screen mode.



panels, keypads & modules

1-2	Wireless
3-11	PowerSeries
12-13	Audio Verification & Integration
14-17	MAXSYS®

sensors & accessories

19-24	Wireless
25-26	Addressable
27-31	Motion Detectors
32	Glassbreak Detectors
33	Smoke Detectors

communications

35-40	Transmitters
41-43	Interactive
45-46	Sur-Gard®

software solutions & services

48-49	Software Solutions
50	Services & Support



panels, keypads & modules





WTK5504 2-Way Wireless TouchScreen Arming Station

- 4.3" full color display
- AC plug-in
- Rechargeable batteries
- 24 hr battery back-up
- User programming
- User function
- Night light
- Sleep mode
- Proximity arm/disarm (WTK5504P only)
- Voice chime/voice prompts
- Wall and desk stand mount
- Multi-language support
- 3-5 year battery life
- Tamper switch
- Compatible with IMPASSA, ALEXOR and PowerSeries (via TR5164)
- 5 programmable function keys
- 3 emergency keys

Approval Listings: FCC/IC, UL/U/LC, SIA CP-01



SCW9057 IMPASSA Self-Contained 2-Way Wireless Security System

- Supports 64 wireless zones and 16 wireless keys (without using a zone slot)
- Optional integrated HSPA (3G) cellular, internet or dual communicator
- Cellular signal strength read-out to optimize placement
- Built-in 2-way audio VOX and push-to-talk alarm communication via phone line and cellular
- 2-way wireless support
 - 4 keypad support
 - 4 siren support
 - 16 wireless keys
- Real time clock update using cellular/ internet communicator
- Remote firmware upgrade via cellular/internet
- Easy wireless device enrollment process
- Template programming
- Full 32-character programmable labels
- 5 programmable function keys
- Individual FAP keys
- 17 user access codes
- 500 event buffer
- False alarm reduction features (CP-01)
- Enlarged keypad buttons
- Outdoor temperature display
- Label library

Approval Listings: FCC/IC, UL/U/LC, SIA CP-01, CSFM



PC9155 ALEXOR 2-Way Wireless Panel

- 32 wireless zones, 16 wireless keys (without using a zone slot)
- Template programming
- 17 user codes
- Account code error checking
- Alternate communications via internet
- Onboard siren at 85dB
- 2 Input/Output terminals
- 200mA aux output
- 500 event buffer
- 24Hr battery backup
- Wall and case tamper
- Independent opening and closing door chime control
- Seamless quick enroll and placement testing

Approval Listings: FCC/IC, UL/U/LC, SIA CP-01, CSFM





Wireless



WT5500 2-Way Wire Free Keypad

- 2x16 full message display
- Intuitive clock programming
- Multiple door chime
- Ambient light sensor
- Display and keymat backlighting
- Outdoor temperature display
- Wall and Deskstand* mount
- † Proximity Arm/Disarm (WT5500P Only)
- Installer's programming
- Multi-language support
- 5 programmable function keys
- 3 one-touch emergency keys
- Tamper switch
- Nominal battery life – 1 year
- Compatible with ALEXOR, IMPASSA and PowerSeries (via TR5164-433)
- Visual armed status during sleep mode
- Blue LCD display screen

* WT5500D or WT5500DMK

Approval Listings: FCC/IC, UL/ULC, SIA CP-01, CSFM



PowerSeries 9047 Self-Contained Wireless Security System

- Smallest footprint of any self-contained wireless alarm system currently available
- Aesthetically pleasing design
- Built-in 2-way audio VOX and push-to-talk alarm communication
- Supports 32 wireless zones and 16 wireless keys (without using a zone slot)
- Full 32-character programmable labels
- Enlarged keypad buttons
- 5 programmable function keys
- Intuitive clock programming
- Input/Output terminals can be programmed to operate as zone inputs or programmable outputs
- Individual FAP keys
- Wireless quick enroll
- 2 PGM outputs
- Template programming
- 17 user codes
- 128 event buffer

Approval Listings: FCC/IC, UL/ULC, SIA CP-01, CSFM



PC1404 PowerSeries Control Panel

- 4 on-board zones
- Supervised zone doubling provides expansion to 8 zones
- Keypad zone support provides expansion to 8 zones
- Support for all current PowerSeries PK collection keypads (v1.2 +)
- 2 on board PGM, expansion to 14 using PowerSeries Output modules
- NC/Single/Double EOL support
- Supports up to 4 keypads
- 1 partition support
- 128 event buffer
- Communications: on-board PSTN
- 4 phone numbers
- 2 and 4-wire smoke detector support
- PC-Link Support for DLS

Approval Listings: FCC/IC, UL/U/LC, SIA CP-01, CSFM



PC1616 PowerSeries Control Panel

- 6 on-board zones
- Expandable to 16 hardwired zones
- Expandable to 32 wireless zones
- 2 PGM outputs: expandable to 14 (PC5204, PC5208)
- Connect up to 8 supervised keypads
- Supports WT5500 wire free keypads with TR5164-433 transceiver
- Template programming with keypad zones
- 2 partitions
- 500-event buffer
- 48 user codes
- CP-01 compliant

Approval Listings: FCC/IC, UL/U/LC, SIA CP-01, CSFM



PC1832 PowerSeries Control Panel

- 8 on-board zones
- Expandable to 32 hardwired zones
- Expandable to 32 wireless zones
- 2 PGM outputs: expandable to 14 (PC5204, PC5208)
- Connect up to 8 supervised keypads with keypad zones
- Template programming
- 4 partitions
- 500-event buffer
- 72 user codes
- CP-01 compliant
- Supports WT5500 wire free keypads with TR5164-433 transceiver

Approval Listings: FCC/IC, UL/U/LC, SIA CP-01, CSFM



PC1864 PowerSeries Control Panel

- 8 on-board zones
- Expandable to 64 hardwired zones
- Expandable to 64 wireless zones
- 4 PGM outputs: expandable to 14 (PC5204, PC5208)
- Template programming
- Connect up to 8 supervised keypads with keypad zones
- 8 partitions
- 500-event buffer
- 95 user codes
- CP-01 compliant
- v4.6 expands to 64 wireless zones with RFK5564 keypad
- Supports WT5500 wire free keypads with TR5164-433 transceiver

Approval Listings: FCC/IC, UL/U/LC, SIA CP-01, CSFM





Features	PC1404	PC1616	PC1832	PC1864
Number Of On-Board Zones	4	6	8	8
Total Zones Supported	8	32	32	64
Keypad Zone Expansion	Yes	Yes	Yes	Yes
Hardwired Zone Expansion	Zone Doubling	Yes	Yes	Yes
Hardwired Zones	8	16 (1 x PC5108)	32 (3 x PC5108)	64 (7 x PC5108)
Wireless Zone Expansion	No	Yes	Yes	Yes (64 Wireless)
Addressable Zone Expansion	No	Yes	Yes	Yes (32 Addressable)
Number of Keypads	4	8	8	8
Number of Wireless Receivers	–	4 (PC5320)	4 (PC5320)	4 (PC5320)
On-Board PGM Outputs	PGM 1 = 50mA PGM 2 = 300mA	PGM 1 = 50 mA PGM 2 = 300 mA	PGM 1 = 50 mA PGM 2 = 300 mA	PGM 1, 3, 4 = 50 mA PGM 2 = 300 mA
Number of Main Panel Low-Current PGM Outputs	1	1	1	3
Number of Main Panel High-Current PGM Outputs	1	1	1	1
PGM Expansion	8 x 50 mA (PC5208) 4 x 500 mA (PC5204)	8 x 50 mA (PC5208) 4 x 500 mA (PC5204)	8 x 50 mA (PC5208) 4 x 500 mA (PC5204)	8 x 50 mA (PC5208) 4 x 500 mA (PC5204)
Number of Additional Low-Current PGM Outputs	8	8	8	8
Number of Additional High-Current PGM Outputs	4	4	4	4
Number of Access Codes	39 + Master Code	47+ Master Code	71+ Master Code	94+ Master Code
Number of Partitions	1	2	4	8
Panel Event Buffer	128	500	500	500
Phone Line Supervision	Yes	Yes	Yes	Yes
Siren Supervision	Yes	Yes	Yes	Yes
Bell Output	12 V / 700 mA (cont)	12 V / 700 mA (cont)	12 V / 700 mA (cont)	12 V / 700 mA (cont)
SIA CP-01 Compliant	No	Yes	Yes	Yes
Event-Initiated Personal Paging	Yes	Yes	Yes	Yes
Upload/Download Support	Yes	Yes	Yes	Yes
Direct-Connect (PC Link) Downloading Support	Yes	Yes	Yes	Yes
DLS SA End-User Downloading Support	No	yes (v4.1 & higher)	yes (v4.1 & higher)	yes (v4.1 & higher)
Internet Alarm Communications	No	Yes	Yes	Yes
Audio Alarm Verification	No	Yes	Yes	Yes
Cellular Alarm Communications	Yes	Yes	Yes	Yes
Battery Required	1.2Ah / 4Ah / 7Ah	4 Ah / 7 Ah / 14 Ahr	4 Ah / 7 Ah / 14 Ahr	4 Ah / 7 Ah / 14 Ahr



PTK5507 PowerSeries TouchScreen Security Interface

- 7" full color display
- Slim modern design (800x480 resolution)
- Intuitive LED indication of security system status
- Picture frame feature
- Clock feature
- Output control
- Intuitive user interface
- Customizable home screen and wallpaper
- Menu user programming
- Installer programming
- Virtual keypad
- SD card is not included
- Compatible with PC1864, PC1832, PC1616 control panels
- Available in English, French and Spanish

Approval Listings: FCC/IC, UL/ULC



PK5500 PowerSeries 64-Zone LCD Full-Message Keypad RFK5500 with Built-In Wireless Receiver RFK5564 with Built-In Wireless Receiver

- Global partition status
- Full 32-character programmable labels
- Modern, slim-line landscape keypad
- Enlarged keypad buttons
- 5 programmable function keys
- Intuitive clock programming
- Input/Output terminal can be programmed to operate as a zone input, programmable output or as a low temperature sensor
- 3 one-touch emergency keys
- Multiple door chime per zone
- Adjustable backlight and keypad buzzer
- Wire channel
- Dual wall-mount and front cover tamper
- Easy-to-install mounting hinge
- Surface or single-gang box mount
- AC status ICON
- Available with English function keys
- v1.3 includes easy wireless device enrollment process with v4.6 panel and pre-programmed label libraries (English, French and Spanish)
- RFK5500 includes all of the same features and supports 32 wireless zones and 16 wireless keys
- RFK5564 includes all of the same features and supports 64 wireless zones and 16 wireless keys

Approval Listings: FCC/IC, UL/ULC, SIA CP-01, CSFM



PK5501 PowerSeries 64-Zone LCD Picture Icon Keypad RFK5501 with Built-In Wireless Receiver

- Modern, slim-line landscape keypad
- Enlarged keypad buttons
- 5 programmable function keys
- Input/Output terminal can be programmed to operate as a zone input, programmable output or as a low temperature sensor
- 3 one-touch emergency keys
- Multiple door chime per zone
- Adjustable backlight and keypad buzzer
- Wire channel
- Dual wall-mount and front cover tamper
- Easy-to-install mounting hinge
- Surface or single-gang box mount
- AC status ICON
- Available with English function keys
- RFK5501 includes all of the same features and supports 32 wireless zones and 16 wireless keys

Approval Listings: FCC/IC, UL/ULC, SIA CP-01, CSFM





PowerSeries



PK5516 PowerSeries 16-Zone LED Keypad RFK5516 with Built-In Wireless Receiver

- Modern, slim-line landscape keypad
- Enlarged keypad buttons
- 5 programmable function keys
- Input/Output terminal can be programmed to operate as a zone input, programmable output or as a low temperature sensor
- 3 one-touch emergency keys
- Multiple door chime per zone
- Adjustable backlight and keypad buzzer
- Wire channel
- Dual wall-mount and front cover tamper
- Easy-to-install mounting hinge
- Surface or single-gang box mount
- AC status ICON
- RFK5516 includes all of the same features and supports 32 wireless zones and 16 wireless keys

Approval Listings: FCC/IC, UL/ULC, SIA CP-01, CSFM



PK5508 PowerSeries 8-Zone LED Keypad RFK5508 with Built-In Wireless Receiver

- Modern, slim-line landscape keypad
- Enlarged keypad buttons
- 5 programmable function keys
- Input/Output terminal can be programmed to operate as a zone input, programmable output or as a low temperature sensor
- 3 one-touch emergency keys
- Adjustable backlight and keypad buzzer
- Wire channel
- Dual wall-mount and front cover tamper
- Easy-to-install mounting hinge
- Surface or single-gang box mount
- AC status ICON
- RFK5508 includes all of the same features and supports 32 wireless zones and 16 wireless keys
- Multiple door chime per zone

Approval Listings: FCC/IC, UL/ULC, SIA CP-01, CSFM



LED5511Z PowerSeries 8-Zone LED Keypad

- Modern, slim-line portrait keypad
- Large, backlit buttons on keypad for trouble-free viewing and activation
- 4 programmable function keys
- Dual FAP keys
- Dual tamper support
- Zone input
- Surface or single-gang box mount
- Wire channel

Approval Listings: FCC/IC, UL/ULC



PowerSeries

LCD5511 PowerSeries 64-Zone Icon LCD Keypad

- Modern, slim-line portrait keypad
- Large, backlit buttons on keypad for trouble-free viewing and activation
- Input/Output terminal can be programmed to operate as a zone input, programmable output or as a low temperature sensor
- 4 programmable function keys
- 8 partition support
- Dual FAP keys
- Wire channel
- New AC status ICON
- Intuitive symbols and backlit display

Approval Listings: FCC/IC, UL/ULC



PC1555RKZ PowerSeries 8-Zone LED Keypad

- LED status lights for zones and status functions
- Zone input

Approval Listings: FCC/IC, UL/ULC, CSFM



PC1404RKZ* PowerSeries 8-Zone LED Keypad

- Modern, slim-line portrait keypad
- Large, backlit buttons on keypad for trouble-free viewing and activation
- 4 programmable function keys
- Dual FAP keys
- Wall tamper support
- Zone input
- Surface or single-gang box mount
- Wire channel
- Buzzer and backlit button control
- Optional white night light
- AC status ICON

*Compatible only with PC1404 control panel

Approval Listings: UL/ULC, FCC/IC, CSFM



**Keypad Overview | PowerSeries Keypad Features**

General Features	PK5500*	PK5501*	PK5516*	PK5508*
Display Type	LCD/ALPHA	LCD/FIXE	LED	LED
Zone Support	64	64	16	8
Partition Support	8	8	8	8
Number of Function Keys	5	5	5	5
Dedicated Function Keys	Yes	Yes	Yes	Yes
Dedicated FAP Keys	Yes	Yes	Yes	Yes
Dual FAP Keys	No	No	No	No
Key Size	Large	Large	Large	Large
AC Status LED	Yes	Yes	Yes	Yes
Integrated Low Temperature Sensor	Yes	Yes	Yes	Yes
Zone Input	Yes	Yes	Yes	Yes
PGM Output	Yes	Yes	Yes	Yes
DEOL Zone Supervision	Yes	Yes	Yes	Yes
Intuitive Clock Programming	Yes	No	No	No
Backlighting Adjustment Control	Yes	Yes	Yes	Yes
Buzzer Adjustment Control	Yes	Yes	Yes	Yes
Multiple Chime Per Zone	Yes	Yes	Yes	Yes
Hardware				
Bezel Color	White	White	White	White
Soft/Hard Lens	Hard	Hard	Hard	Hard
Profile	Landscape	Landscape	Landscape	Landscape
* Integrated RF Receiver Models	RFK5500/RFK5564	RFK5501	RFK5516	RFK5508
Buzzer/Backlighting Adjustment Retained After Power Loss	Yes	Yes	Yes	Yes
"Hands Free" Installation Hinge	Yes	Yes	Yes	Yes
Wire Channel	Yes	Yes	Yes	Yes
Single-Gang Box Mount	Yes	Yes	Yes	Yes
Double-Gang Box Mount	Yes	Yes	Yes	Yes
Case Tamper (Dual Tamper Support)	Yes	Yes	Yes	Yes

* RFK versions of these keypads are available with a built-in wireless receiver and support 32 or 64 wireless zones and 16 wireless keys

**Keypad Overview | PowerSeries Keypad Features (continued)**

General Features	PC1555RKZ	LCD5511	LED5511Z	PC1404RKZ
Display Type	LED	LCD/FIXED	LED	LED
Zone Support	8	64	8	8
Partition Support	2	8	2	1
Number of Function Keys	0	4	4	4
Dedicated Function Keys	No	No	No	No
Dedicated FAP Keys	Yes	No	No	No
Dual FAP Keys	No	Yes	Yes	Yes
Key Size	Small	X-Large	X-Large	Large
AC Status LED	No	No	No	Yes
Integrated Low Temperature Sensor	No	Yes	No	No
Zone Input	Yes	Yes	Yes	Yes
PGM Output	No	Yes	No	No
DEOL Zone Supervision	No	No	No	Yes
Intuitive Clock Programming	No	No	No	No
Backlighting Adjustment Control	No	No	No	Yes
Buzzer Adjustment Control	No	Yes	Yes	Yes
Multiple Chime Per Zone	No	Yes	No	No
Hardware				
Bezel Color	Beige	White	White	White
Soft/Hard Lens	Soft	Soft	Soft	Soft
Profile	Portrait	Portrait	Portrait	Portrait
* Integrated RF Receiver Models	N/A	N/A	N/A	N/A
Buzzer/Backlighting Adjustment Retained After Power Loss	No	No	No	Yes
“Hands Free” Installation Hinge	No	No	No	No
Wire Channel	No	Yes	Yes	Yes
Single-Gang Box Mount	Yes	Yes	Yes	Yes
Double-Gang Box Mount	No	No	No	No
Case Tamper (Dual Tamper Support)	No	Yes	Yes	No

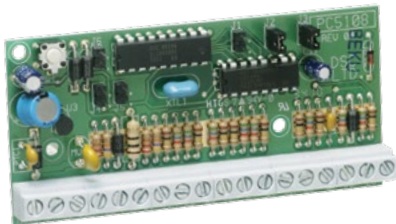
* RFK versions of these keypads are available with a built-in wireless receiver and support 32 or 64 wireless zones and 16 wireless keys



PC5100 PowerSeries Addressable Zone Expander

- Connect up to 32 addressable detectors (AML)
- Detectors can be home-run, t-tapped or daisy chained
- Easy detector enroll process
- Compatible with PC1616, PC1832 and PC1864 control panels

Approval Listings: FCC/IC, UL/U/LC, CSFM



PC5108 PowerSeries 8-Hardwire Zone Expander

- Adds 8 hardwire zones
- AUX power, 125 mA (PTC protected)
- Compatible with PC1616, PC1832 and PC1864 control panels

Approval Listings: FCC/IC, UL/U/LC, CSFM



TR5164-433 PowerSeries 2-Way Wireless Transceiver

- Supports both 2-way and 1-way wireless devices
- Supports 4 wire-free keypads WT5500
- Supports 16 wireless keys (any combination of 1-way or 2-way wireless keys)
- Supports 60 wireless zones
- 8-partition support for 1-way wireless keys
- Compatible with PC1616, PC1832 and PC1864 v4.6+

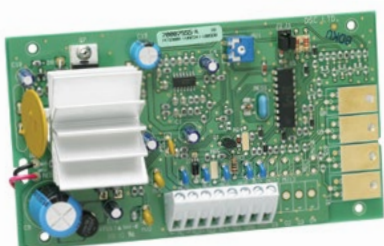
Approval Listings: FCC/IC, UL/U/LC, CSFM



RF5132-433 PowerSeries Wireless Receiver

- Supports 32 wireless zones, 16 wireless keys
- All wireless detectors are fully supervised for communication integrity
- Compatible with PC1616, PC1832 and PC1864 control panel

Approval Listings: FCC/IC, UL/U/LC, CSFM



PC5200 & PC5204 PowerSeries Power Supply Modules

- Fully supervised for AC failure, low battery and AUX failure
- PC5204 adds 4 programmable high current voltage outputs: rated at 1 Amp @ 12 VDC, output #1 can be used as a supervised bell output
- Compatible with all PowerSeries control panels
- Connect one PC5204 and up to four PC5200 supervised modules on a system
- Provides up to 1 Amp @ 12 VDC

Approval Listings: FCC/IC, UL/U/LC, CSFM



PC5208 PowerSeries Programmable Output Module

- Provides 8 low current (50 mA) PGM voltage outputs
- Compatible with PC1616, PC1832 and PC1864 control panels

Approval Listings: FCC/IC, UL/ULC, CSFM



PC5320 Multiple Wireless Receiver Module

- Multi-frequency support for combination of 900/433 MHz receivers
- Compatible with PC1616, PC1832 and PC1864 PowerSeries control panels
- Can be used to connect up to 4 wireless receivers for increased coverage

Approval Listings: FCC/IC, UL/ULC



PC5400 Printer Interface Module

- Compatible with PC1616, PC1832 and PC1864 control panels
- Can be used to support a serial printer

Approval Listings: FCC/IC, UL/ULC, CSFM



ESCORT 5580TC Telephone Interface & Automation Control Module

- Turns any touchtone phone into a talking keypad
- Built-in X-10 interface: supports up to 32 X-10 devices, 16 schedules, 8 modes
- Compatible with PC1616, PC1832 and PC1864 control panels
- Programmable labels: 6 words per label, 240+ word library

Approval Listings: FCC/IC, UL/ULC





PC5950 Universal 2-Way Vox Audio Verification Module

- Supports both 2-way audio VOX and push-to-talk verification
- Supports 4 microphones and 2 speakers
- KEYBUS direct connect allows all programming to be performed at the system keypad or remotely using DLS 5 software
- KEYBUS compatible with PC1616, PC1832 and PC1864 control panels
- Universal installation compatibility with any control panel using either PGM and/or Bell dry contact outputs
- Silent/Listen-in functionality on hold-up alarms (activates only when an alarm occurs)
- User call-in feature

Approval Listings: FCC/IC



PC5961 Stand-Alone Audio Station

- Equipped with speaker/microphone
- New modern look
- Specifically designed for 2-way voice verification
- 4-wire connection to module
- Surface or single-gang box mount

Approval Listings: FCC/IC



PC5962 Contoured Audio Station

- Equipped with speaker/microphone
- New modern look
- Fits seamlessly to side of PK/RFK series of keypads
- Specifically designed for 2-way voice verification
- 4-wire connection to module

Approval Listings: FCC/IC



PC5964 Large Speaker Station

- Equipped with speaker/microphone
- New modern look
- Specifically designed for 2-way voice verification
- Bell follower functionality (replaces internal sounder on premises)
- 4-wire connection to module
- Surface or single-gang box mount

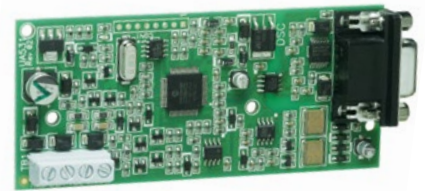
Approval Listings: FCC/IC



IT-100 PowerSeries Integration Module

- Bi-directional RS-232 interface
- Real-time zone status
- Fully programmable
- 4-wire hook-up to KEYBUS
- Virtual keypad mode
- Supported by many integration drivers
- Compatible with all PowerSeries control panels PC1616/PC1832/PC1864

Approval Listings: FCC/IC



IT-230 RS-422 Interface Module

- Compatible with PowerSeries panels v4.5 and higher
- 4-wire keybus and included PC-LINK header hookup
- Compatible with leading-edge interactive solutions supported by DSC

Approval Listings: FCC/IC



PC5601 Status Module

- Tri-color LED provides security system status at a glance
- Standard single-gang footprint
- Sleek plastic enclosure complements home décor
- Color-coded wiring harness included
- Only supports 1 partition
- KEYBUS-compatible with all PowerSeries control panels





PC4020 MAXSYS Control Panel

- 16 on-board zones
- Expandable up to 128 zones using hardwire, wireless modules and addressable zones
- Supports up to 16 hardwired keypads
- 8 partitions
- Expandable to 64 wireless zones
- 1,500 user codes (4 or 6 digit)
- 3,000 event buffer
- 9 account and 3 phone numbers
- Built-in telephone line and siren supervision
- Auto SIA and Contact ID formats
- Supports GSM and T-Link™ alarm communicators
- Full upload/download support with DLS2002 software

Approval Listings: FCC/IC, UL/ULC, CSFM



LCD4501 MAXSYS Programmable-Message LCD Keypad

- Connect up to 16 keypads
- Large, backlit, 2-line, 32-character display
- Plain-language display of zone status, system status, trouble conditions, event buffer, system instructions, date and time
- Ready, Armed and Trouble LEDs
- 5 programmable function keys
- 4 keypad-activated alarms: Panic, Auxiliary, Fire and Duress
- Backlight boost

Approval Listings: FCC/IC, UL/ULC, CSFM



PC4108A & PC4116 MAXSYS 8/16 Hardwire Zone Expanders

- PC4108A adds 8 hardwire zones
- PC4116 adds 16 hardwire zones
- AUX power rated at 250 mA (PTC protected)

Approval Listings: FCC/IC, UL/ULC, CSFM



RF4164-433 MAXSYS Wireless Receiver

- Supports 64 wireless zones, 16 wireless keys
- Up to 8 receivers on one system
- All wireless detectors are fully supervised for communication Integrity

Approval Listings: FCC/IC, UL/ULC



PC4204/PC4204CX MAXSYS Power Supply/Relay Output/Combus Repeater Module

- Connect up to 16 modules
- 4 programmable form 'C' relays
- Fully supervised for AC failure, low battery and AUX failure

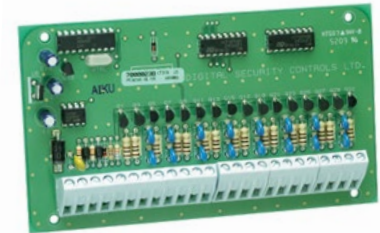
Approval Listings: FCC/IC, UL/ULC



PC4216 MAXSYS 16 Low Current Output Module

- Provides 16 programmable outputs: rated at 50 mA @ 12 VDC
- Connect up to 9 PC4216 modules per system

Approval Listings: FCC/IC, UL/ULC, CSFM



PC4401 MAXSYS Data Interface Module

- Connect up to 4 modules
- Capable of performing as either a bi-directional RS-232 interface, PC-Link isolator or printer module
- Real-time zone status
- Fully programmable
- 4-wire hook-up to COMBUS

Approval Listings: FCC/IC, UL/ULC, CSFM

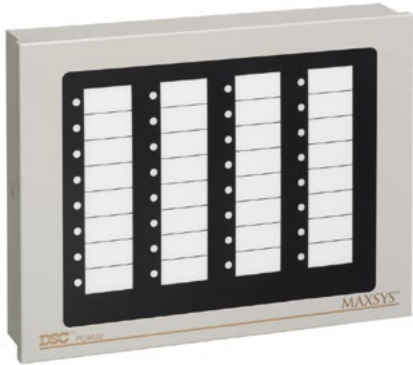


ESCORT4580 MAXSYS Telephone Interface and Automation Control Module

- Turns any touchtone phone into a talking keypad
- Built-in X-10 interface: supports up to 32 X-10 devices, 16 schedules, 8 modes
- Available in English, Spanish and French
- Programmable labels: 6 words per label, 240+ word library

Approval Listings: FCC/IC, UL/ULC





PC4632 & PC4664 MAXSYS 32/64 Point Graphic Annunciators

- Egg-crate backplate for flexible LED locations
- Pre-printed point display transparency
- Clear transparencies (2) for custom graphics

Approval Listings: FCC/IC, UL, CFSM



PC4820 MAXSYS 2-Reader Access Control Module

- Connect up to 16 modules
- Multiple reader technologies
- 2 supervised lock outputs: 250 mA per output
- 2 access door support per module for up to total of 32 on system
- 99 date schedules
- 4 holiday groups
- Arm/Disarm partitions via access control
- PC4053 beige cabinet included
- 64 user access levels

Approval Listings: FCC/IC, UL/ULC



MaxKit MAXSYS Access Control Kit

This affordable package is the perfect access control starter kit. It has all the essentials you need: control panel, access control module, reader and keys in one low-cost package. If needed, the system can be easily expanded.

Includes:

- 1 PC4020 control panel
- 1 PC4820 2-reader access control module
- 1 P225W26 ioProx reader
- 10 P40KEY ioProx dual-encoded proximity keys



Accessories for the MAXSYS Access Control Kit

T-REX Request-To-Exit Detector

- MAXSYS supports passive infrared request-to-exit detector with patented X-Y targeting™ and DSP (Digital Signal Processing)

Approval Listings: FCC/IC, UL

- To order or request more information on Kantech products, please visit www.kantech.com



KANTECH

From Tyco Security Products

Readers

- MAXSYS supports a wide range of 26-bit Weigand readers: Polaris™, ioProx™, Shadowprox™, HID and Kantech XSF Technologies

Approval Listings: FCC/IC

- To order or request more information on Kantech products, please visit www.kantech.com



KANTECH

From Tyco Security Products



sensors & accessories





Wireless

WT4989 2-Way Wireless Key

- Backlit ICON display
- Built-in buzzer for audible feedback
- Key tactile feedback
- 4 one touch function keys, programmable for up to 6 functions
- Status button indication
- Wireless key keylock
- Active alarm indication
- Water resistant
- Multifunction clip
- Nominal Battery life – 3 years
- Compatible with ALEXOR, IMPASSA and PowerSeries (via TR5164-433)

Approval Listings: FCC/IC, UL/UJLC, SIA CP-01



WS4938 1-Button Personal Panic

- Activation via 1 large, easy-to-use button
- Integrated LED to indicate signal transmission
- Neck strap and multifunction belt clip included
- Reliable 433 MHz technology
- Water resistant
- Full 2-second delay on panic button
- Long-life lithium batteries included
- Supervised

Approval Listings: FCC/IC, UL/UJLC



WS4949 2-Button Wireless Key

- 2-button, 3-function wireless key
- Activation via 2 large, scratch-resistant buttons
- Full 3-second delay on panic function
- Integrated LED to indicate signal transmission
- Reliable 433 MHz technology
- Long-life lithium batteries included
- Water resistant

Approval Listings: FCC/IC



WS4939 4-Button Wireless Key

- Durable, scratch-resistant buttons
- 4 programmable function keys
- Long-life lithium batteries included
- Full 3-second delay on panic alarm to reduce false alarms
- Multifunction belt clip included
- Reliable 433 MHz technology
- Optional generic rubber insert included
- Water resistant

Approval Listings: FCC/IC, UL/UJLC, SIA CP-01





WS4969 4-Button Wireless With Built-In Flashlight

- Built-in, high-intensity LED flashlight
- Durable, scratch-resistant buttons
- 4 programmable function keys
- Long-life lithium batteries included
- Full 3-second delay on emergency alarm to reduce false alarms
- Reliable 433 MHz technology
- Water resistant

Approval Listings: FCC/IC



WS4959 5-Button Wireless Key

- 12 programmable function keys
- Integrated tri-color LED to indicate signal transmission and security modes
- 4 durable, scratch-resistant buttons and center toggle button
- Multifunction belt clip included
- Reliable 433 MHz technology
- Full 3-second delay on panic function
- Long-life lithium batteries included
- Water resistant

Approval Listings: FCC/IC



WS4979 4-Button Wireless Wall Plate

WS4979 features a slim, attractive design that fits nicely on homeowners' inside walls or other accessible locations. The WS4979 has all of the same functions as the WS4939 4-button wireless key and can be mounted or installed easily, at minimal cost.

- Durable, easy to operate buttons
- 4 programmable function keys
- Powered by long-life lithium batteries (included)
- Full three-second delay on panic alarm to reduce false alarms
- Reliable 433 MHz technology
- Additional functions: open garage doors, turn on lights, open powered gates, etc.
- Programmable Disarm function
- Lightweight
- Slim, attractive design

Approval Listings: FCC/IC



WS4945* Wireless Door/Window Contact

- Built-in reed switch
- Normally closed external contact input
- 1 lithium battery included
- Available in brown housing
- Case and wall tamper

* WS4945N normally open version available

Approval Listings: FCC/IC, UL/ULC



Wireless

EV-DW4975 Vanishing Contact

- Built-in reed switch
- Wafer-thin profile
- Long-life lithium battery included
- 5/8" (16 mm) magnet gap
- Reliable 433 MHz technology
- Includes double-sided tape

Approval Listings: FCC/IC



EV-DW4917 Wireless Recessed Door Transmitter

- Small, compact design
- Long-life lithium battery included
- Flexible mounting options (screw mount or press fit)
- Reliable 433 MHz technology
- Powerful, rare earth magnet
- Ships complete with flanged/non-flanged, brown/white access caps

Approval Listings: FCC/IC



WS4965 Tri-Zone Wireless Door/Window Contact

- 3 zones in 1 (each zone has an individual serial number)
- 1 reed/magnet combination zone
- Tilt switch mode for overhead doors
- 2 normally closed external contact inputs
- Long-life lithium battery included
- 1/2" (13 mm) maximum magnet gap
- Low-battery LED indicator
- Case tamper
- Reliable 433 MHz technology
- Includes backplate

Approval Listings: FCC/IC, UL/ULC



WS4904P Wireless Pet-Immune Passive Infrared Detector

- WS4904P replaces the WLS904PL-433
- Based on the Bravo® 3D hardwire motion detector
- High-traffic shutdown
- WS4904P features pet immunity up to 60 lb (27 kg)
- 1 lithium battery included

Approval Listings: FCC/IC, UL/ULC





WLS914-433 Wireless Pet-Immune Passive Infrared Detector

- Based on the Bravo® 6 hardwire motion detector
- High-traffic shutdown
- Pet immunity up to 85 lb (39 kg)
- 4 'AA' batteries included

Approval Listings: FCC/IC, UL/ULC

WS4913 Wireless CO Detector

Colorless, tasteless, odorless but deadly, carbon monoxide (CO) is impossible to detect without a warning device. The WS4913 provides frontline protection against the silent threat of carbon monoxide poisoning.



- Slim-line design
- Built-in 85dB alarm at 10 ft (3 m)
- Malfunction supervision
- Low sensitivity supervision
- Electrochemical sensing technology
- Transmits RF status, low battery and tamper condition
- Hush feature
- Wall tamper
- 4-5 year battery life
- Onboard LEDs indicate:
 - * Red – Alarm
 - * Yellow – Trouble
 - * Green – Power
 - * Amber – Warm Up
- End-of-Life (EOL) indicator (5 years)
- Low battery supervision
- Compatible with ALEXOR, IMPASSA and PowerSeries v4.5 & higher

Approval Listings: FCC/IC, UL/ULC



WS4916 Wireless Photoelectric Smoke Detector with Heat

- Automatic drift compensation
- Built-in, dual-sensor heat detector with fixed heat and rate of rise (non UL listed)
- Built-in 85dB horn
- Local test button
- Low profile design
- High/Low sensitivity reporting
- Low battery indication
- Easy-maintenance removable smoke chamber
- Non-contact sensitivity reading with handheld test meter (FSD-100)
- Long-life lithium batteries included
- UL/ULC listed for residential applications

Approval Listings: FCC/IC, UL/ULC, CSFM



Wireless

WS4926 Wireless Photoelectric Smoke Detector

- Automatic drift compensation
- Built-in 85dB horn
- Local test button
- Low profile design
- High/Low sensitivity reporting
- Easy-maintenance removable smoke chamber
- Non-contact sensitivity reading with handheld test meter (FSD-100)
- Long-life lithium batteries included
- UL/ULC listed for residential applications
- Low battery indication

Approval Listings: FCC/IC, UL/ULC, CSFM



WT4901 2-Way Wireless Indoor Siren

- Siren Output – 85dB
- Siren sounds for alarms, door chimes, entry/exit delay and troubles
- Transmits RF status, low battery and tamper condition
- Front and back tamper detection
- Nominal battery life – 1 year
- Compatible with ALEXOR & IMPASSA
- Onboard test button

Approval Listings: FCC/IC, UL/ULC, SIA CP-01, CSFM



WT4911 2-Way Wireless Outdoor Siren

- Siren Output – 100dB
- Siren sounds for alarms and squawks
- Strobe light functionality for visual indication
- Provides temperature to WT5500 wire-free keypad
- Transmits RF status, low battery and tamper condition
- Large print area for company logo
- Front and back tamper detection
- IP34 rating
- Nominal battery life – 2-3 years
- Compatible with ALEXOR & IMPASSA
- Remote test capability

Approval Listings: FCC/IC, UL/ULC, SIA CP-01



WS4985 Wireless Flood Detector

The wireless flood detector is based on the WS4945 wireless door/window contact that is connected to a water probe through a 6 foot-wire. The product is enrolled as a flood zone detector with the following DSC control panels: ALEXOR, PowerSeries 9047, IMPASSA, PC1616, PC1832, PC1864, PC4020, and is fully supervised.

- Built-in reed switch
- Normally closed external contact input
- 1 lithium battery included
- Case and wall tamper
- End-of-line resistor
- 4 year battery life

Approval Listings: FCC/IC





WS4920 Wireless Repeater

- Greatly extends the range of DSC 1-way wireless devices
- Compatible with IMPASSA
- Backward compatible with existing security systems including ALEXOR, PowerSeries 9047, PowerSeries and MAXSYS
- WS4920 identifies the optimal location for mounting taking in to consideration noise and interference
- Quick enrolment of DSC 1-way wireless devices
- Status LEDs for AC, battery and RF Jam
- Up to four repeaters can be installed for each panel/receiver
- WS4920 supports up to 164 wireless devices
- Wall and case tamper protection
- Aesthetically pleasing design

Approval Listings: FCC/IC, UL/ULC



WLS912L-433 Wireless Glassbreak Detector

- Based on the Acuity® glassbreak detector
- 2 lithium batteries included
- Tamper-activated test mode: should be tested using the AFT-100 glassbreak simulator

Approval Listings: FCC/IC, UL/ULC



EV-DW4927SS Wireless Shock Sensor With Built-In Door/Window Contact

- Electro mechanical shock sensor
- Adjustable sensitivity
- Pre-alert
- Built-in reed contact
- User-replaceable lithium battery

Approval Listings: FCC/IC, UL/ULC



RXL2-433 2-Channel Wireless Receiver

- 2 on-board form 'C' relay outputs
- Supports up to 6 wireless buttons per output
- 4 programmable relay options (Momentary, Timed, Latched and Continuous)
- Independent of security system type
- No serial number to program
- 120 VAC plug-in transformer included
- Reliable 433 MHz technology
- Compatible with WS4949, WS4939, WS4959 and WS4969 wireless keys

Approval Listings: FCC/IC



Addressable

AMA-100 Addressable Glassbreak Detector

- Based on the Acuity® hardwire glassbreak detector
- Detects all types of breaking glass: plate, laminated, safety and tempered
- Can be tested using the glassbreak simulator (AFT-100)
- Built-in tamper switch

Approval Listings: FCC/IC, UL/ULC



AMB-300 Addressable Passive Infrared Detector

- Patented MLSP (Multi-Level Signal Processing)
- Interchangeable lenses: wall-to-wall lens (standard), curtain lens, pet-immune lens and corridor lens
- Built-in tamper switch
- Based on the Bravo® 3 hardwire motion detector

Approval Listings: FCC/IC, UL/ULC



AMB-500 Addressable Ceiling-Mount Passive Infrared Detector

- Based on the Bravo® 5 hardwire motion detector
- Built-in tamper switch
- Coverage diameter based on mounting height

Approval Listings: FCC/IC, UL/ULC



AMB-600 Addressable Pet-Immune Passive Infrared Detector

- Based on the Bravo® 6 hardwire motion detector
- Patented MLSP (Multi-Level Signal Processing)
- Provides pet immunity up to 85 lb (39 kg)
- Built-in tamper switch

Approval Listings: FCC/IC, UL/ULC





FSB-210 Series Addressable Photoelectric Smoke Detectors
FSB-210B (without Heat Sensor)
FSB-210BT (with Heat Sensor) – Fixed Heat With Rate Of Rise
 (rate of rise feature not UL listed)

Note: Not available in Canada

- Automatic drift compensation
- Easy-maintenance removable smoke chamber
- Non-contact sensitivity reading with handheld test meter (FSD-100)
- Self diagnostics

Approval Listings: FCC/IC, UL, CSFM



AML-770B Loop Isolator Module

- Can be used to isolate burglary detectors from fire detectors on the same wire run

Approval Listings: FCC/IC, UL/ULC



AMX-400 Loop Repeater/Isolator Module

- Can be used to repeat and re-power the AML loop to allow for longer wire runs
- Requires 12 VDC power source
- Will isolate the wire run in the event of a problem
- Provides additional 170 mA

Approval Listings: FCC/IC, UL/ULC

Addressable Contact Modules



Model	Description
AMP-700	Door/Window contact with built-in reed switch
AMP-701	Door/Window contact with normally closed external contact input
AMP-702	Fire point module with normally open, EOL resistor supervised external contact input
AMP-704	4-zone door/window contact with normally closed, single or double EOL inputs

Approval Listings: FCC/IC, UL/ULC



Motion Detectors

Bravo® 5 360° Ceiling-Mount PIR Motion Detectors

- Temperature compensation for improved catch performance at critical temperatures
- Patented Multi-Level Signal Processing (MLSP) for accurate detection of human IR energy over a broad range of temperatures
- Sensitivity adjustment to configure the detector for normal or hostile environments
- High-level static and transient protection
- Exceptional white light immunity
- Excellent RF immunity
- Digital signal analysis for consistent detection throughout the coverage pattern

Approval Listings: FCC/IC, UL/ULC

PIR only

Model	Description
BV-500	Form 'A' alarm contact
BV-501	Form 'A' alarm contact & tamper switch
BV-502	Form 'C' alarm contact & tamper switch

PIR and Glassbreak

Model	Description
BV-500GB	Form 'A' alarm contact (motion), form 'C' alarm contact (glassbreak)
BV-501GB	Form 'A' alarm contact (motion), form 'C' alarm contact (glassbreak) & tamper switch
BV-502GB	Form 'C' alarm contact (motion), form 'C' alarm contact (glassbreak) & tamper switch



Bravo® 6 Twin, Dual-Element, Pet-Immune PIR Motion Detectors

- Digital signal analysis for consistent detection throughout the coverage pattern
- Digital temperature compensation for improved catch performance at critical temperatures
- Patented Multi-Level Signal Processing (MLSP) for accurate detection of human IR energy over a broad range of temperatures
- Pet immunity up to 85 lb (39 kg)

Approval Listings: FCC/IC, UL/ULC

Optional mounting brackets available: DM-W (wall-mount bracket) or DM-C (ceiling-mount bracket)

Model	Description
BV-600	Form 'A' alarm contact
BV-601	Form 'A' alarm contact & tamper switch
BV-602	Form 'C' alarm contact & tamper switch





LC-100-PI & LC-120-PI PIR Detector with Pet Immunity

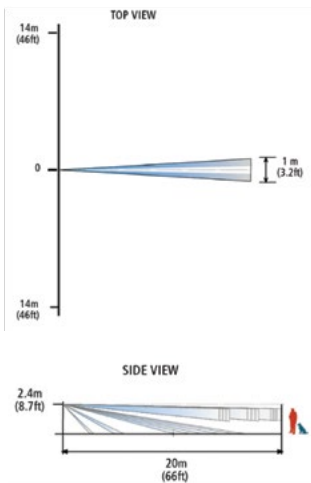
The LC-100-PI (Form 'A' contact) and LC-120-PI (Form 'C' contact) detectors feature intelligent signal analysis for reliable detection, pet immunity up to 55 lb (25 kg) and a slim design that complements any décor.

- Form 'A' or 'C' alarm contact and tamper switch
- Digital signal analysis
- Pet immunity up to 55 lb (25 kg)
- Quad Linear Imaging Technology for sharp analysis of body dimensions and differentiation from backgrounds and pets
- Advanced ASIC-based electronics
- Compact design for residential installations
- Adjustable variable pulse count
- PIR sensitivity adjustment
- Height installation calibration free
- Available in packages of 6 (LC-100-PI-6PK)
- LC-L1ST bracket available separately

Approval Listings: FCC/IC, UL/ULC

Model	Description
LC-100-PI-6PK	Form 'A' alarm contact & tamper switch
LC-120-PI	Form 'C' alarm contact & tamper switch

LC-L1-CL-12PK Coverage Pattern



LC-L1ST bracket

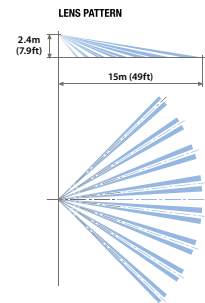


Ceiling mounting



Wall mounting

Coverage Pattern





Motion Detectors

LC-103-PIMSK, LC-104-PIMW & LC-124-PIMW Dual Technology Motion Detector with Pet Immunity

The LC-103-PIMSK, LC-104-PIMW and LC-124-PIMW are dual-technology motion detectors that combine passive infrared and microwave detection with pet immunity. LC-103-PIMSK also supports anti-masking. The anti-masking feature prevents intruders from defeating the detector by covering its field of view.

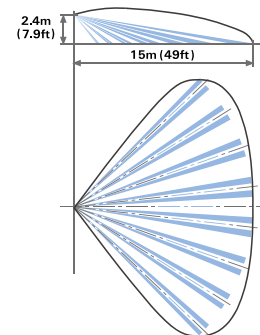
- Anti-masking (LC-103-PIMSK)
- Form 'A' or 'C' alarm contact and tamper switch
- Digital signal analysis
- Pet immunity up to 55 lb (25 kg)
- Quad Linear Imaging Technology for sharp analysis of body dimensions and differentiation from backgrounds and pets
- Microwave detection based on Doppler concept
- Unique microwave motion sensor module with micro-strip patch antenna
- Advanced ASIC-based electronics Height installation calibration free 2-way PIR/microwave sensitivity adjustment
- User-friendly installation with or without swivel-mount bracket available separately: LC-L1ST

Approval Listings: FCC/IC, UL/ULC



Model	Description
LC-103-PIMSK-W	Form 'A' 10.525 GHz alarm contact & tamper switch
LC-104-PIMW-W	Form 'A' 10.525 GHz alarm contact & tamper switch
LC-124-PIMW-W	Form 'C' 10.525 GHz alarm contact & tamper switch

Coverage Pattern



LC-L1ST bracket



Ceiling mounting



Wall mounting



LC-151 Dual-Tech Outdoor Motion Sensor (Single PIR & Microwave) with Adjustable Pet Immunity

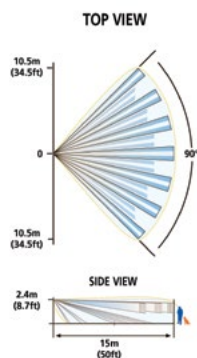
The LC-151 is a unique motion detector utilizing a single passive infra-red element and Microwave technology and is designed for outdoor use in the most severe climatic conditions. The LC-151 can also accommodate pets with the addition of optional pet immunity lenses. High reliability is achieved by combining both dual tech hardware with highly sophisticated software, greatly reducing the possibility of false alarms.



- Frequency: 10.525 GHz
- Microwave detection based on Doppler concept
- N.O. & N.C. relays switched at the same time
- Installation height is calibration free from 6 ft to 8 ft (1.8 m to 2.4 m)
- Pet Immune up to 33 lb (15 kg) without pet immunity lens or up to 80 lb (36 kg) when using supplied LC-F1-15X pet immunity lens
- PIR sensitivity adjustment
- MW intensity selection
- Temperature compensation
- Microcontroller signal processing
- Front and back tamper protection
- Unique waterproof and seal plastic design
- Detection range: up to 49 ft (15 m)
- Detects human intruders walking or running
- No maintenance required
- High RFI/EMI immunity
- Protection from: direct sunlight, wind up to 30m/sec, snow and rain, small animals, removal of top cover and removal from mounting bracket
- Rain and dust proof: IP65
- LC-B1-15X wall mount bracket available separately

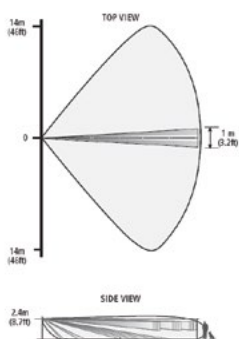
Approval Listings: FCC/IC

Coverage Pattern



Corridor Lens Coverage Pattern

LC-L1-15X



Model	Description
LC-151	Form 'C' alarm contact and tamper switches

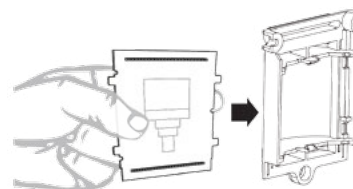
Wall mount bracket

LC-B1-15X



Corridor Lens

LC-L1-15X





Motion Detectors

LC-171 Dual-Tech Outdoor Motion Sensor (Double PIR & Microwave) with Pet Immunity

The LC-171 is a unique motion detector utilizing dual passive infra-red elements and Microwave technology and is designed for outdoor use in the most severe climatic conditions. The LC-171 can also accommodate pets.

High reliability is achieved by combining both dual tech hardware with highly sophisticated software and an adaptive coverage area, greatly reducing the possibility of false alarms. The active elements are comprised of a dual element PIR and advanced Microwave detector inside a stylish, rigid plastic body.

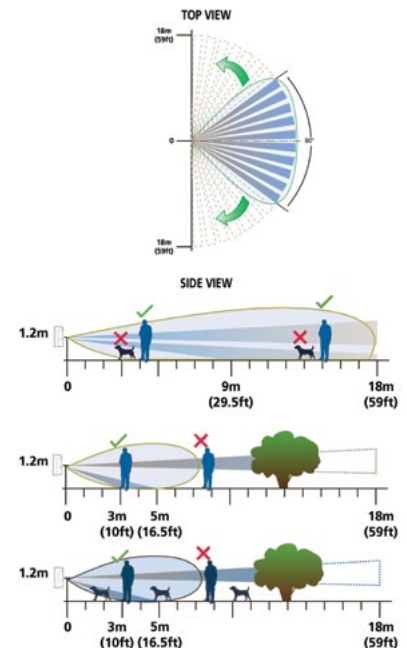
- Frequency: 24.125 GHz
- Microwave detection based on Doppler concept
- N.O. & N.C. Relays switched at the same time
- Pet immunity up to 77 lb (35 kg)
- 16 levels of PIR sensitivity adjustment and 3 microwave sensitivity groups
- Temperature compensation
- Microcontroller signal processing
- Front and back tamper protection
- Audible indication of walk test and intruder detection
- Unique waterproof sealed plastic design
- Detection range: up to 59 ft (18 m)
- Detect human intruders walking or running
- No maintenance required
- High RFI/EMI immunity
- Protection from: direct sunlight, wind up to 30 m/sec, snow and rain, small animals, removal of the top cover and removal from mounting bracket
- Rain and dust proof: IP65

Approval Listings: FCC/IC

Model	Description
LC-171	Form 'C' alarm contact and tamper switches



Coverage Pattern





Acuity® Glassbreak Detectors

- Advanced microprocessor-based glassbreak sensor
- High-level static and transient protection
- High RF immunity with SMD construction
- White noise rejection mechanism
- Installer test mode for glassbreak sensor (AFT-100 tester required)
- Alarm memory (latching LED) for glassbreak sensor
- MOV transient/static protection
- Jumper selectable sensitivity range

Approval Listings: FCC/IC, UL/ULC

Wall-Mount

Model	Description
AC-100	Form 'A' alarm contact
AC-101	Form 'A' alarm contact & tamper switch
AC-102	Form 'C' alarm contact & tamper switch



Ceiling-Mount

Model	Description
AC-500	Form 'A' alarm contact



DG-50AU Glassbreak Detector

- Clean, modern design blends with any décor
- Advanced signal discrimination for accurate identification of breaking glass
- Resistant to blinding by background noises
- Sensitivity adjustment potentiometer
- Anti-shock design prevents false alarms from mechanical shock
- MOV static/lighting protection
- SMD construction and integral ground shield for high RF immunity

Approval Listings: FCC/IC, ULC

Accessories:

AFT-100 Glassbreak Simulator

The AFT-100 glassbreak simulator provides the most reliable and accurate indication of the correct mounting location for the detector. Do not install the detector beyond the maximum recommended range, even if the glassbreak simulator reports additional range. Future changes in room acoustics could reduce any additional range.



SS-102 Shock Sensor

- Unique bi-colored LED to indicate minor or major attacks
- Anti-tamper protection
- Moisture-resistant electronics module
- Sensitivity adjustment
- High immunity to low-frequency false alarms and radio interference
- Compatible with all makes of control panels
- SS-102 is able to monitor for minor vibrations (and count them to a preset limit) and for major attacks at the same time

Approval Listings: FCC/IC





FSA-210/410 Wired Photoelectric Smoke Detectors

- Automatic drift compensation
- Built-in, dual-sensor heat detector (option)
- Built-in 85dB horn (option)
- Easy-maintenance removable smoke chamber
- Interconnectable using PRM-2W/4W polarity reversal modules
- Non-contact sensitivity reading with handheld test meter (FSD-100)
- Low profile design
- Local test button

Approval Listings: FCC/IC, UL/ULC, MEA, CSFM



FSA-210

Model	Description
FSA-210(x)*	2-wire photoelectric smoke detector
FSA-210(x)T*	2-wire photoelectric smoke detector w/ heat detector
FSA-210(x)ST*	2-wire photoelectric smoke detector w/ integral sounder & heat detector
FSA-210(x)RT*	2-wire photoelectric smoke detector w/ aux. relay & heat detector

FSA-410

Model	Description
FSA-410(x)*	4-wire photoelectric smoke detector
FSA-410(x)T*	4-wire photoelectric smoke detector w/ heat detector
FSA-410(x)RT*	4-wire photoelectric smoke detector w/ aux. relay & heat detector
FSA-410(x)S*	4-wire photoelectric smoke detector w/ integral sounder
FSA-410(x)ST*	4-wire photoelectric smoke detector w/ integral sounder & heat detector
FSA-410(x)RST*	4-wire photoelectric smoke detector w/ integral sounder, aux. relay & heat detector

*Legend (x) = 'A' Canadian model number (ULC listed) | (x) = 'B' U.S. model number (UL listed)
Not all models available in all regions

FSD-100 Handheld Test Meter

Precise and quick sensitivity testing is easily accomplished with the non-contact FSD-100 handheld test meter. Powered by a standard 9V alkaline battery and small enough to fit inside a shirt pocket, the FSD-100 holds 500 readings that can be downloaded to any computer. To initiate a reading, a technician simply holds the FSD-100 near a DSC smoke detector and activates the detector's test button.

Approval Listings: FCC/IC, UL/ULC



Accessories:

PRM-2W

Polarity reversal module, PCB for panel mounting (2-wire interconnect)

Approval Listings: FCC/IC, UL/ULC, CSFM

PRM-2WC

Polarity reversal module in plastic case (2-wire interconnect)

Approval Listings: FCC/IC, UL/ULC, CSFM

PRM-4W

Polarity reversal module, PCB for panel mounting (4-wire interconnect)

Approval Listings: FCC/IC, UL/ULC, CSFM

PRM-4WC

Polarity reversal module in plastic case (4-wire interconnect)

Approval Listings: FCC/IC, UL/ULC, CSFM

RM-2

End-of-line power supervisory relay (4-wire detectors only)

Approval Listings: UL/ULC, CSFM



communications





Transmitters

3G2055 HSPA Cellular Alarm Communicator

- Compatible with IMPASSA Wireless Panel
- Back up and primary HSPA alarm communication
- Panel remote uploading/downloading support via cellular
- Supervision heartbeats via cellular
- 128-bit AES encryption via cellular
- SIA and Contact ID protocol
- SIM Card (included)
- Signal strength and trouble display via IMPASSA
- Full event reporting
- Dual-Band HSPA: 850 MHz, 1900 MHz
- Quad-Band GPRS/EDGE: 850 MHz, 1900 MHz, 900 MHz and 1800 MHz
- Compatible with Sur-Gard System I/II/III/IV monitoring station receivers
- UL standard & encrypted line security
- Command and Control via SMS
- 2-Way voice over cellular via cellular (with IMPASSA v1.1 firmware)
- Antenna Extension Kits available: GS-8ANTP, GS-15ANTQ, GS-25ANTQ, GS-50ANTQ
- Compatible with leading-edge interactive solutions supported by DSC

Approval Listings: FCC/IC, PTCRB, UL/ULC, CSFM, AT&T/Rogers



TL2553G Internet and HSPA Dual-Path Alarm Communicator

- Compatible with IMPASSA Wireless Panel
- Fully redundant Internet and HSPA dual-path alarm communication
- Integrated call routing
- Panel remote uploading/downloading support via cellular and Internet
- Supervision heartbeats via cellular and Internet
- 128-bit AES encryption via cellular and Internet
- Full event reporting
- SIA and contact ID protocol
- SIM Card (included)
- Signal strength and trouble display via IMPASSA
- Dual-Band HSPA: 850 MHz, 1900 MHz
- Quad-Band GPRS/EDGE: 850 MHz, 1900 MHz, 900 MHz and 1800 MHz
- Compatible with Sur-Gard System I/II/III/IV monitoring station receivers
- UL standard & encrypted line security
- Active cellular account is required to use IP function
- Command and Control via SMS
- 2-Way voice over cellular
- Antenna Extension Kits available: GS-8ANTP, GS-15ANTQ, GS-25ANTQ, GS-50ANTQ
- Compatible with leading-edge interactive solutions supported by DSC

Approval Listings: FCC/IC, PTCRB, UL/ULC, CSFM, AT&T/Rogers





3G2060R HSPA Cellular Alarm Communicator

- Compatible with PC1864/1832/1616 control panels (v4.1 and higher)
- Back up and primary HSPA alarm communication
- Panel remote uploading/downloading support via cellular
- Supervision heartbeats via cellular
- 128-bit AES encryption via cellular
- Full event reporting
- SIA protocol
- SIM Card (included)
- Compatible with Sur-Gard System I/II/III/IV monitoring station receivers
- UL standard & encrypted line security
- ULC passive or active line security levels
- Antenna Extension Kits available: GS-15ANTQ, GS-25ANTQ, GS-50ANTQ
- Signal strength and trouble display
- Contact ID protocol (with PowerSeries firmware v4.5 and communicator (v1.1 or higher)
- PC-Link connection
- Compatible with leading-edge interactive solutions supported by DSC

Approval Listings: FCC/IC, PTCRB, UL/ULC, NIST (AES Encryption Validation), AT&T/Rogers



TL2603GR Internet and HSPA Dual-Path Alarm Communicator

- Compatible with PC1864/1832/1616 control panels (v4.1 and higher)
- Fully redundant Internet and HSPA dual-path alarm communication
- Integrated call routing
- Panel remote uploading/downloading support via cellular and Internet
- Supervision heartbeats via cellular and Internet
- 128-bit AES encryption via cellular and Internet
- Full event reporting
- SIA protocol
- SIM Card (included)
- Compatible with Sur-Gard System I/II/III/IV monitoring station receivers
- UL standard & encrypted line security
- ULC passive or active line security levels
- Active cellular account is required to use IP function
- Antenna Extension Kits available: GS-15ANTQ, GS-25ANTQ, GS-50ANTQ
- Signal strength and trouble display
- Contact ID protocol (with PowerSeries firmware v4.5 and communicator (v1.1 or higher)
- PC-Link connection
- Compatible with leading-edge interactive solutions supported by DSC

Approval Listings: FCC/IC, PTCRB, UL/ULC, NIST (AES Encryption Validation), CSFM, AT&T/Rogers



Transmitters

3G3070-CF HSPA Universal Cellular Commercial Fire Alarm Communicator

Note: Not available in Canada

- Compatible with control panels that communicate using the Contact ID format
- Compatible with Sur-Gard System I/II/III/IV monitoring station receivers
- Uses HSPA data channel for high-speed, reliable and low-cost communications to an IP receiver
- 4 on-board inputs
- CSFM Approved
- Includes UL listed power supply, transformer and 7 Ah rechargeable battery
- UL 864 9th Edition
- Can be used as sole or multiple path communicator
- Antenna Extension Kits available: GS-15ANT, GS-25ANT, GS-50ANT
- 4 on-board outputs (open collector)
- SIM card (included)
- Full event reporting
- Compliant with NFPA72 Editions: 2002, 2007, 2013

Approval Listings: FCC, UL (Commercial Fire/BURG), PTCRB, AT&T/Rogers, CSFM, FM, NYC Fire Dept. (back-up only)



3G3070 HSPA Universal Cellular Alarm Communicator

- Compatible with control panels that communicate using the Contact ID format
- Uses HSPA data channel for high-speed, reliable and low-cost communications to Sur-Gard I/II/III/IV receivers
- 4 on-board outputs (open collector)
- 4 on-board inputs
- Full event reporting
- Monitors the panel's attempts to communicate to determine if cellular backup communications are necessary
- ULC passive line security levels P1-P3 (use in conjunction with compatible ULC dialer)
- Antenna Extension Kits available: GS-15ANT, GS-25ANT, GS-50ANT
- SIM card (included)

Approval Listings: FCC/IC, UL/ULC, PTCRB, AT&T/Rogers





ADP1310-NA GS3060 and 3G3070 Transformer

- Dimension: 4" (H) x 2.375" (W) x 2" (D)
- North America plug
- Inputs: 100- 240 VAC, 50/60Hz
- Outputs: 13.8 VDC, 1 Amp
- UL model: ADP1310-NAU

Approval Listings: UL/ULC Energy Efficiency Level IV approvals

Note: Not used for installations that require standby supply (battery backup)



GS2065 GPRS Cellular Alarm Communicator

- Compatible with ALEXOR Wireless Panel
- Back up and primary GPRS alarm communication
- Panel remote uploading/downloading support via GPRS
- Supervision heartbeats via GPRS
- 128-bit AES encryption via GPRS
- SIA protocol
- SIM Card (included)
- PC-Link connection
- Full event reporting
- Signal strength and trouble display
- Quad-Band: 850 MHz, 1900 MHz, 900 MHz and 1800 MHz
- Compatible with Sur-Gard System I/II/III/IV monitoring station receivers
- UL standard & encrypted line security
- Antenna Extension Kits available: GS-15ANTQ, GS-25ANTQ, GS-50ANTQ
- Contact ID protocol (with ALEXOR firmware v1.1 and communicator firmware v1.1 or higher)
- Command and Control via SMS (US only)

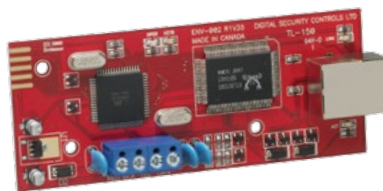
Approval Listings: FCC/IC, PTCRB, UL/ULC, NIST (AES Encryption Validation), CSFM, AT&T/Rogers



TL265GS Internet and GPRS Dual-Path Alarm Communicator

- Compatible with ALEXOR Wireless Panel
- Fully redundant Internet and GPRS dual-path alarm communication
- Integrated call routing
- Panel remote uploading/downloading support via GPRS and Internet
- Supervision heartbeats via GPRS and Internet
- 128-bit AES encryption via GPRS and Internet
- Full event reporting
- SIA protocol
- SIM Card (included)
- PC-Link connection
- Signal strength and trouble display
- Quad-Band: 850 MHz, 1900 MHz, 900 MHz and 1800 MHz
- Compatible with Sur-Gard System I/II/III/IV monitoring station receivers
- UL standard & encrypted line security
- Active GS account is required to use IP function
- Antenna Extension Kits available: GS-15ANTQ, GS-25ANTQ, GS-50ANTQ
- Contact ID protocol (with ALEXOR firmware v1.1 and communicator firmware v1.1 or higher)
- Command and Control via SMS (US only)

Approval Listings: FCC/IC, PTCRB, UL/ULC, NIST (AES Encryption Validation), CSFM, AT&T/Rogers



TL150 Residential Internet Alarm Communicator

- Compatible with PowerSeries control panel
- Supports all PowerSeries control panels
- Supervised as a KEYBUS module (supervision of both KEYBUS and network connections)
- T-Link programming (IP address and account number) through a web-browser interface
- Homeowners can arm/disarm security system and view zone status through a web page on their home computer
- Instant, always-on IP communication
- Compatible with Sur-Gard System I/II/III monitoring station receivers
- Low network bandwidth usage
- Compatible with 10/100BaseT networks
- 128-bit AES encryption
- Supports DHCP (dynamic IP addresses)
- Works over local LAN/WAN network or the Internet

Approval Listings: FCC/IC



Transmitters

TL250 Internet Alarm Communicator

- Compatible with PowerSeries (v3.24 and higher) and MAXSYS (v3.31 and higher) control panels
- Works over local LAN/WAN network or the Internet
- 128-bit AES encryption (NIST approved)
- Supports DHCP (dynamic IP addresses)
- Low network bandwidth requirements
- Compatible with 10/100BaseT networks
- Reports events to 2 different receiver IP addresses
- Polling and hardware substitution protection
- Instant, always-on IP communication
- Software upgrades via network
- 4 on-board programmable inputs and 2 programmable voltage outputs as stand-alone module
- Programmable through the system keypad, PK5500 LCD keypad or T-Link Console software
- Download control panel via Internet with DLS software
- Compatible with Sur-Gard System I/II/III/IV monitoring station receivers
- UL standard & encrypted line security
- ULC passive or active line security levels A₁-A₄

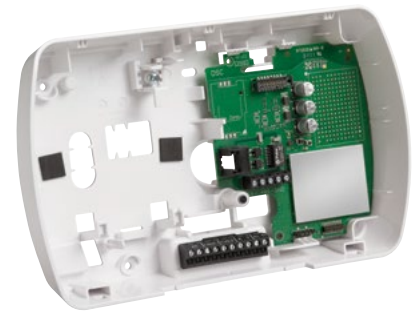
Approval Listings: FCC/IC, UL/UJLC, CSFM, NIST (AES Encryption Validation)



TL255 Internet Alarm Communicator

- Compatible with IMPASSA control panel
- Panel remote uploading & downloading via internet using DLS 5
- Programmable using DLS 5 or keypad
- Supervision heartbeat via internet
- 128 Bit AES Encryption
- Full event format
- SIA and Contact ID protocol
- Compatible with leading-edge interactive solutions supported by DSC

Approval Listings: FCC/IC, UL/UJLC, CSFM, NIST (AES Encryption Validation)



TL260R Internet Alarm Communicator

- Compatible with PC1864/PC1832/PC1616 control panels (v4.1 and higher)
- Panel remote uploading & downloading via internet using DLS 5
- Programmable using DLS 5 or keypad
- Supervision heartbeat via internet
- 128 Bit AES Encryption
- Full event format
- SIA protocol
- Contact ID Protocol (with PowerSeries v4.5 and communicator firmware v1.1 or higher)
- Compatible with leading-edge interactive solutions supported by DSC

Approval Listings: FCC/IC, UL/UJLC, CSFM, NIST (AES Encryption Validation)

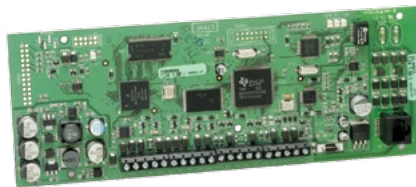




TL265 Internet Alarm Communicator

- Compatible with ALEXOR
- Panel remote uploading & downloading via internet using DLS 5
- Programmable using DLS 5 or keypad
- Supervision heartbeat via internet
- 128 Bit AES Encryption
- Contact ID format (with ALEXOR firmware v1.1 and communicator firmware v1.1)
- PC-Link connection
- UL Standard & encrypted line security
- ULC Passive or active security levels
- Supports DHCP or static IP addresses
- Full event format
- SIA format

Approval Listings: FCC/IC, UL/ULC, CSFM, NIST (AES Encryption Validation)



TL300 Universal Internet Alarm Communicator

- Compatible with most control panels that use the Contact ID format
- Instant, always-on IP communication
- Works over local LAN/WAN network or the Internet
- 128-bit AES encryption (NIST approved)
- Supports DHCP (dynamic IP addresses)
- Low network bandwidth requirements
- Compatible with 10/100BaseT networks
- Reports events to 2 different receiver IP addresses
- UL standard & encrypted line security
- 12-24 volt DC support (v1.5 and higher)
- 4 on-board programmable zone inputs and 2 programmable voltage outputs as stand-alone module
- Programmable through the PK5500 LCD keypad or T-Link Console software
- Software upgrades via network
- Compatible with Sur-Gard System I/II/III/IV monitoring station receivers
- ULC passive or active security levels
- ULC active line security levels A₁-A₄
- Polling and hardware substitution protection
- Compliant with NFPA72 Editions: 2002, 2007, 2013

Approval Listings: FCC/IC, UL/ULC, CSFM, FM, NIST (AES Encryption Validation)



TL300CF Kit

- Commercial fire internet communicator
- Works with any control panel that communicates using contact ID format
- Configured for standalone commercial fire applications
- Compliant with NFPA72 Editions: 2002, 2007, 2013
- Power supply included
- Compatible with most control panels that use the Contact ID format
- 128-bit AES encryption (NIST approved)
- Supports DHCP (dynamic IP addresses)
- Low network bandwidth requirements
- Reports events to 2 different receiver IP addresses
- UL standard & encrypted line security
- 4 on-board programmable zone inputs and 2 programmable voltage outputs as stand-alone module
- Programmable through the PK5500 LCD keypad or T-Link Console software
- Software upgrades via network
- Compatible with Sur-Gard System I/II/III/IV monitoring station receivers
- ULC passive or active security levels
- ULC active line security levels A₁-A₄
- Polling and hardware substitution protection

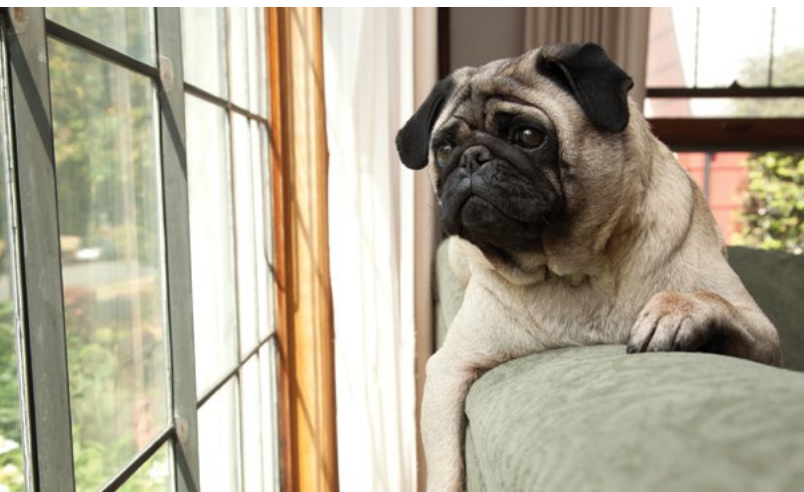
Approval Listings: FCC/IC, UL/ULC, CSFM, FM



return to Contents



Wherever you are,
you can rely on **DSC**
to bring home closer.



Interactive -- with DSC, it's simply a matter of choice

A selection of quality security products by DSC are now compatible with leading-edge solutions offered by trusted interactive service experts.

Maximize the full potential of your security system with a variety of smart home control and monitoring features offered through DSC's interactive service partners Telguard* and Alarm.com. It's reliability, flexibility and service excellence at its finest.

For more information on available features and packages, talk to your security professional or visit www.dsc.com

A world of interactive choice - with DSC

* In Canada, Telguard products and services are offered and sold under the Telular brand.



DSC

From Tyco Security Products

DSC

Security and Interactive Components Compatible with Telguard HomeControl



IMPASSA v1.1+
Makes Interactive Easy

Panel: SCW9057
Communicators: 3G2055,
TL255, TL2553G

Interactive -- with DSC it's simply a matter of choice.

Quality intrusion products by DSC, paired with interactive service experts, to maximize the full potential of IMPASSA v1.1+ and PowerSeries v4.6+ with a variety of smart home control and monitoring features offered through Telguard HomeControl*.

PowerSeries v4.6+

Getting Flexible with Hybrid and Interactive



Panels: PC1616, PC1832, PC1864
Communicators: 3G2060R, TL260R, TL2603GR
RS422 Interface Module: IT-230

Reliable DSC Hardware Bundles

with interactive service excellence delivered by Telguard HomeControl



Gateway: ASG1000-1T5NAS
Thermostat: TBZ48D
Indoor/Outdoor IP Camera: C24-CAM54IR
NTSC Analog Camera Module: C24-CAMANL



* In Canada, Telguard products and services are offered and sold under the Telular brand.



The **Easy Way** to *Protect* and *Connect* Home



Alarm.com delivers comprehensive, proven connected home solutions for your customers.

Now available with DSC's **IMPASSA** v1.3+, a comprehensive all-in-one security panel, you can offer peace of mind and a complete connected home experience with the ultimate in ease-of-use, convenience and control.

- Dedicated cellular communication
- Image Sensor integration
- Easy device enrollment
- Complete home automation, energy management and video service offerings
- Access to exclusive features like Geo-Services and Smart Schedules

**For more information contact
Alarm.com (sales@alarm.com)
or your local DSC distributor
(info@dsc.com)**





[return to Contents](#)

SUR-GARD

From Tyco Security Products





SG-SYSTEM I/SG-SYSTEM I-IP Dual Phone Line with Optional IP Receiver



- Multi-format receiver
- Integrated scheduled receiver line card testing
- Up to 63 different profiles and up to eight different handshakes per profile
- 500-event memory buffer on each individual POTS channels
- Patented ANI and DNS reception, Automatic Handshake Selection (AHS), Caller ID capability and virtual configurations
- Continuous verification of computer (automation) connection
- One parallel, one serial, one USB, one TCP/IP printer port available
- One serial, one TCP/IP automation port available
- One USB, one TCP/IP console port available
- Non-volatile RAM for programming and event buffer
- Optional support for 512 IP Communicators (SG-SYS1512IP)
- Rack mount in standard 19-inch rack with the SG-SII-RMK
- 128 Bit AES encryption over IP
- Menu-driven, 40-character, 2-line LCD display with blue backlighting provides instruction when in manual mode
- 4 buttons for manual programming and acknowledgement of alarm signals when in manual mode
- Universal power supply compatible with 110/220 50 Hz/60 Hz
- Onboard flash memory and DSP for future software upgrades and enhancements

Approval Listings: FCC/IC, UL/ULC, CSFM, NIST (AES Encryption Validation)

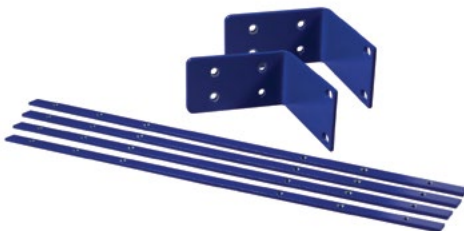
SG-SYSTEM II Single-Line IP Receiver



- Value-priced remote monitoring solution ideal for lower-volume applications
- Supports up to 512 supervised and up to 1,536 IP communicator accounts (all DSC communicators)
- Rack mount in standard 19-inch rack with the SG-SII-RMK
- TCP/IP, USB, serial outputs to automation software
- 128-bit AES encryption
- Works over local LAN/WAN network as well as the Internet
- Polling and hardware substitution protection
- Compatible with 10/100BaseT networks
- Fully programmable via SG-Systems Console software
- Menu-driven, 40-character, 2-line LCD display with blue backlighting provides instruction when in manual mode
- 4 buttons for manual programming and acknowledgement of alarm signals when in manual mode
- Universal power supply compatible with 110/220 50 Hz/60 Hz
- Onboard flash memory and DSP for future software upgrades and enhancements
- Additional 1,536 IP communicator accounts available with license key upgrade (SG-SYS21536IP)

Approval Listings: FCC/IC, UL/ULC, CSFM, NIST (AES Encryption Validation)

SG-SII-RMK Rack Mount Kit



- Rack mount kit for SG-SYSTEM I-IP or SG-SYSTEM-II to mount in any standard 19" rack



SG-SYSTEM III Virtual Receiver

- Up to 24 line cards per System III receiver
SG-DRL3IP or SG-DRL3E, SG-DRL3-2L
- Fully “hot-swappable” modules
- Fully programmable via SG-Systems Console software
- Eliminates fixed-line hunt groups
- Integrated scheduled receiver line card testing
- Blocks unwanted communications
- Requires less physical space
- Upgradeable flash memory
- Automation output over TCP/IP or RS-232

Approval Listings: FCC/IC, UL/ULC, CSFM, FM, NIST (AES Encryption Validation)



SG-System IV Virtual Receiver

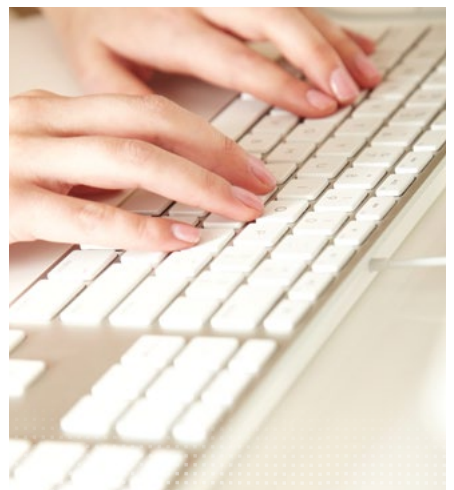
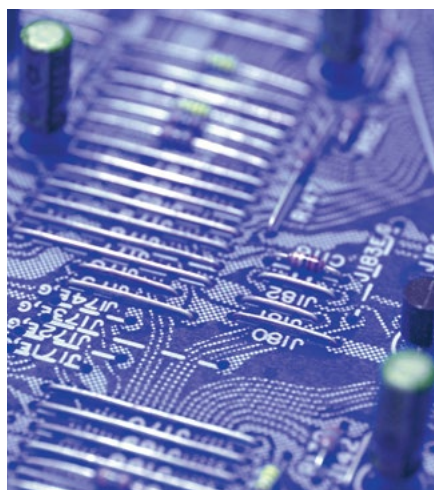
- Supports over 120 communication formats in small footprint
- Auto-switching redundancy for power and to output peripherals
- Fully ‘hot swappable’ modules
- Supports up to 24 line cards – IP or PSTN
- Can mix and match line cards
- ‘Flash’ download for software updates for lines cards and CPM
- Robust built-in diagnostic software
- User-friendly configuration tools
- Supports an AHS (Automatic Handshake Table) of 250,000 entries. Expandable to 500,000 with a separate license key
- Supports up to 9216 IP accounts per SG-DRL4-IP

Approval Listings: FCC/IC, UL/ULC, CSFM, FM, NIST (AES Encryption Validation)





software solutions & services





DLS 5 Downloading Software

DLS 5 is future-ready! Primed for compatibility with future technologies, DLS 5 Downloading Software offers user-friendly interfaces. It runs on Microsoft's powerful .NET Framework 4.0 and now uses an ultra-light SQLite database. Installation is quick and easy. All necessary software packages will be installed automatically during the DLS 5 installation process.

NOTE: SQLite is a light-weight database which does not require any database engine installation.

Features

- Supports a wide array of DSC products, from the latest released products back to PowerSeries v4.1
- Tightly integrated with C24 Communications to allow cellular connections
- Available in "Workgroup" mode, enabling larger organizations to host a centralized support database
- Optimized communication workflows allowing scheduled communications, unattended communications and complete communication queue
- Packed with record keeping & convenience features to meet all your business needs

Supported Operating Systems

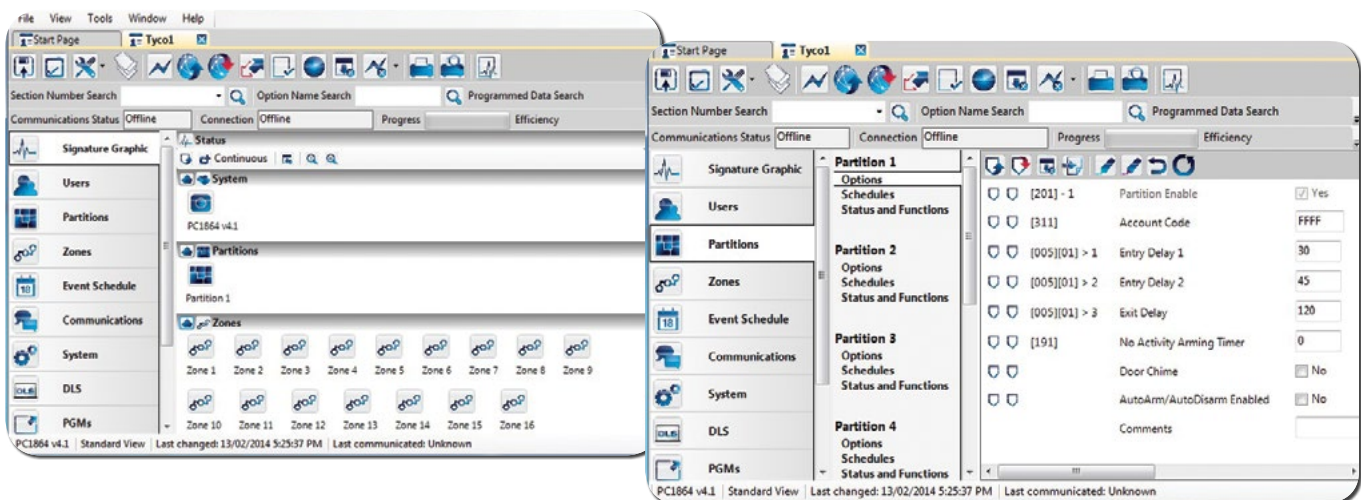
- Windows XP Professional with Service Pack 2, Windows Installer 3.1 and kb926255 Windows updates installed with Service Pack 3 or higher
- Windows Vista all versions 32 & 64 bit
- Windows 7 Original or with Service Pack 1 32 & 64 bit

Supported Database

- SQLite

Minimum System Requirements

- 1GHz Pentium III compatible processor; 1Gb of RAM; up to 2GB of available disk space





DLS SA Downloading Software

DLS SA is a separate software application designed to provide non technical users the ability to configure a limited set of options along with providing access, complete history and diagnostics. DLS SA will help streamline installations, reduce programming time and decrease service calls. DLS SA caters to the needs of various organizational structures, from a stand-alone set-up for one user and one control panel, to multiple users administrating one or more control panels.

Supported Programmable Functions

- Access code programming
- Partition auto arm/disarm control
- Holiday schedules
- System status
- System functions

Supported DSC Security Panels

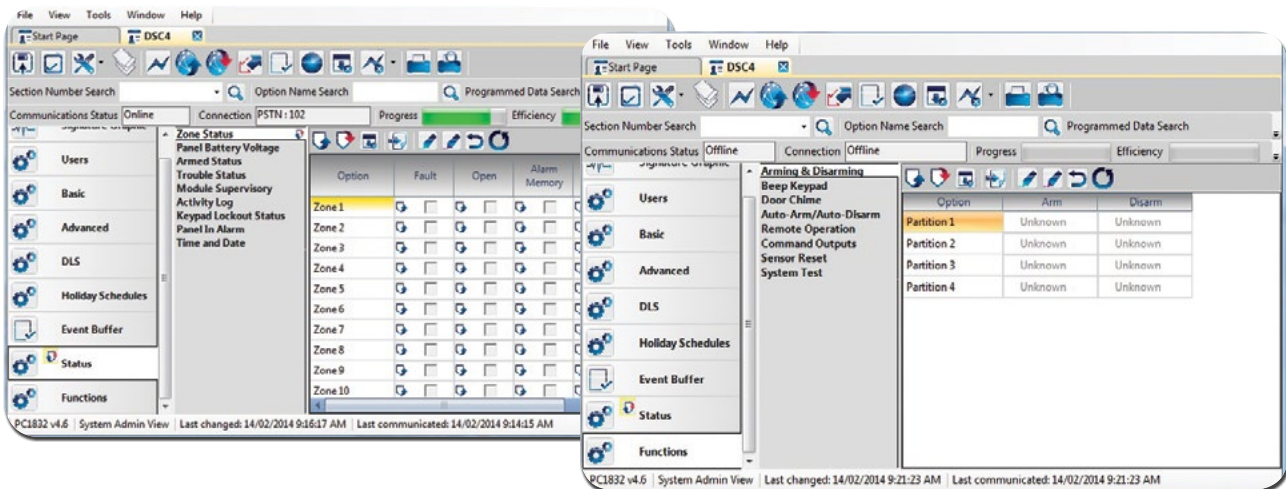
- PC1616 v4.1 +
- PC1832 v4.1 +
- PC1864 v4.1 +

Supported Operating Systems

- Windows XP Professional with Service Pack 2, Windows Installer 3.1 and kb926255 Windows updates installed with Service Pack 3 or higher
- Windows Vista - all versions - 32 & 64 bit
- Windows 7 Original or with Service Pack 1 - 32 & 64 bit

Minimum System Requirements

- 1GHz Pentium III compatible processor; 1Gb of RAM; up to 2GB of available disk space





DSC Services & Support



DSC understands that security dealers everywhere need more than just great products, they deserve exceptional service and support as well. That is why we have committed resources to ensure we're in a position to help our customers as needed.

DSC Customer Service and Support

A dedicated team of Technical Support, Customer Service and Sales Support Representatives are available to provide security professionals with valuable expertise and in-depth product knowledge. The Customer Service and Support Center offers extended hours of services and access to all departments within DSC with multilingual support.

For any inquiries, general product information or the location of the nearest DSC distributor, please call 1 888.888.7838 (Toll Free) / +1 905.760.3000 or email us at info@dsc.com.

For technical support issues, please call 1 800.387.3630 or email tech@dsc.com.

DSC marketplace.com

The DSC marketplace.com is your primary method for ordering product-specific literature, associated marketing support materials and promotional items. To access this great service, please visit www.dscmarketplace.com and complete the short registration form. Your account will be activated within 48 hours allowing you to start browsing the site at your convenience. To ensure proper materials are being ordered, you can view thumbnail pictures as well as download PDF files of all items. For more information please visit www.dscmarketplace.com.

www.dsc.com

The DSC website is an intuitive, easy-to-navigate resource that provides security professionals with access to a wealth of product-specific information. Password-protected areas are tailored specifically for security dealers and offer the latest news on DSC products, corresponding events and launches, the latest technical support materials and diagnostic tools, and helpful industry and association links. Downloadable PDF versions of all DSC sales and specification sheets, images, end-user manuals, architect and engineer specifications, plus the complete DSC product catalog can be found on the website. Visit www.dsc.com to learn more.



Since 1998, C24 Communications has been activating and administering cellular devices (DSC branded Alarm Communicators) for security alarm dealers in North America. The units are activated through a Voice response Unit (VRU) over a phone line, mobile interface or via C24 Communications' web portal.

These secure interfaces allow for the activation, editing and deactivation of accounts, the retrieval of device status and programming or modification of communicator options.

For more information on C24 Communications, please visit www.connect24.com





return to Contents

PowerSeries

EXPANDABLE HYBRID SECURITY SOLUTIONS



Keypad & User-Interfaces



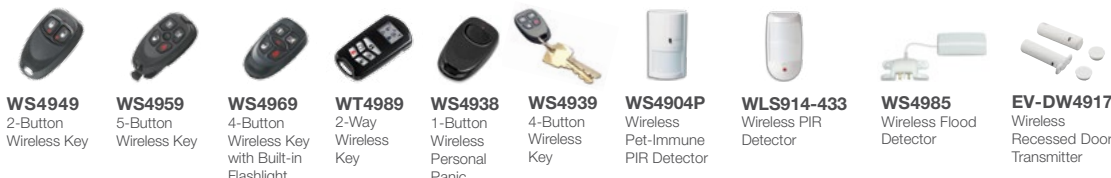
PK5500 64-Zone LCD Full-Message Keypad
PK5501 64-Zone LCD Picture Icon Keypad
PK5508 8-Zone LED Keypad
PK5516 16-Zone LED Keypad
PTK5507W TouchScreen Security Interface
PTK5507S TouchScreen Security Interface
PC1404RKZ 8-Zone LED Keypad
LCD5511 64-Zone Icon LCD Keypad
LED5511Z 8-Zone LED Keypad
PC1555RKZ 8-Zone LED Keypad

High & Low Current Output Expansion



PC5200/PC5204 Power Supply Modules
PC5208 Programmable Output Module

Wireless Devices & Detectors

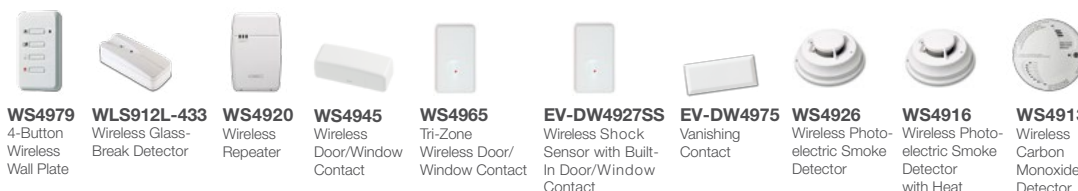


WS4949 2-Button Wireless Key
WS4959 5-Button Wireless Key
WS4969 4-Button Wireless Key with Built-in Flashlight
WT4989 2-Way Wireless Key
WS4938 1-Button Wireless Personal Panic
WS4939 4-Button Wireless Key
WS4904P Wireless Pet-Immune PIR Detector
WLS914-433 Wireless PIR Detector
WS4985 Wireless Flood Detector
EV-DW4917 Wireless Recessed Door Transmitter

Hardwired & Addressable Zone Expansion



PC5108 8-Zone Hardwire Expander
PC5100 Addressable Zone Expander



WS4979 4-Button Wireless Wall Plate
WLS912L-433 Wireless Glass-Break Detector
WS4920 Wireless Repeater
WS4945 Wireless Door/Window Contact
WS4965 Tri-Zone Wireless Door/Window Contact
EV-DW4927SS Wireless Shock Sensor with Built-In Door/Window Contact
EV-DW4975 Vanishing Contact
WS4926 Wireless Photoelectric Smoke Detector
WS4916 Wireless Photoelectric Smoke Detector with Heat
WS4913 Wireless Carbon Monoxide Detector

Telephone Interface/Automation Control



ESCORT 5580 Telephone Interface and Automation Control Module
IT-230 RS-422 Interface Module
IT-100 Integration Module

Wireless Keypads & Zone Expansion



WT5500-WT5500P 2-Way Wire Free Keypad
RFK5501 64-Zone LCD Picture Icon Keypad with Built-In Wireless Receiver, 32 zones
RFK5500 64-Zone LCD Full-Message Keypad with Built-In Wireless Receiver, 32 zones
RFK5564 64-Zone Full-Message Keypad with Built-In Wireless Receiver
WTK5504/WTK5504P Wireless TouchScreen Arming Station
RF5132-433 Wireless Receiver
PC5320 Multiple Wireless Receiver Module
TR5164-433 2-Way Wireless Transceiver

Control Panels



PC1864 8-64 Zone Control Panel
PC1832 8-32 Zone Control Panel

Alarm Communication Options



3G2060R HSPA Cellular Alarm Communicator
TL260R Internet Alarm Communicator
TL2603GR Internet & HSPA Dual-Path Alarm Communicator

Addressable Detectors



FSB-210 Series Addressable Photoelectric Smoke Detector
AMB-500 Addressable Ceiling-Mount PIR Detector
AMB-300 Addressable PIR Detector
AMB-600 Addressable Pet-Immune PIR Detector
AMP-700/AMP-701 AMP-702/AMP-704 Addressable Contact Modules



PC1616 6-16 Zone Control Panel
PC1404 4-8 Zone Control Panel

Hardwired Detectors & Devices



FSA-210/410 Wired Photoelectric Smoke Detector
AC-100/AC-500 Glassbreak Detector
BV-500 360° Ceiling-Mount PIR Motion Detector
LC-100-PI PIR Detector with Pet-Immunity
BV-300 PIR Detector
PC5601 Status Module
LC-151/171 Pet-Immune Dual-Tech Outdoor Motion Detectors
SS-102 Shock Sensor
BV-600 Dual-Element, Pet-Immune PIR Motion Detector
LC-103-PIMSK & LC-104-PIMK Dual-Tech Motion Detector with Pet-Immunity

DSC Interactive



Compatible with leading-edge interactive solutions supported by DSC

Audio Alarm Verification



PC5961 Stand-Alone Audio Station
PC5962 Contoured Audio Station
PC5964 Large Speaker Station
PC5950 Audio Verification Module

Windows® Software



DLS SA System Administrator Software
DLS 5 Downloading Software



return to Contents

DSC

From Tyco Security Products

For more information on the products featured here or on any other DSC products please call **1 905.760.3000 | 1 888.888.7838** Toll-free in US & Canada

E-mail us at **info@dsc.com** or contact your DSC Account Representative

Please visit us at **www.dsc.com**

© 2014 Tyco Security Products 03/14